

INTERFINE CHEMICALS

ANALYTICAL SCIENCES

BIOCHROMATOGRAPHY

LIFE SCIENCES

Tél. +33 (0)4 70 03 73 01 ■ interfine@interchim.fr

Product Data Sheet

PURIFLASH® MS

Mass Directed Purification for the Masses

- ✓ Mass triggered fraction collection from normal & reverse flash chromatography & prep-LC
- ✓ Mass & Purity confirmation of flash fractions
- ✓ 100% confidence
- ✓ Real-time reaction monitoring of batch reactions
- ✓ The hood-based puriFlash MS reduces the burden on open-access platforms

Specification

Ion Source: APCI (ESI as option, easy switch)

API: orthogonal ion sampling from heated capillary – allows for small single turbo pump (Patents pending)

Flow rate range: 10 µL/min to 500 µL/min

Polarity: +ve and -ve ion in sequential analyses

m/z Range: m/z 10 to m/z 1,200

Acquisition rate: 5,000 m/z units sec⁻¹

Resolution: 0.5-0.7 m/z units (FWHM) at 1000 m/z units sec⁻¹ over entire acquisition range

SIM sensitivity: 10 pg Reserpine (FIA - 5µL injection at 100 µL/min)
100:1 S/N (RMS) with SIM of m/z 609.28

Scan sensitivity: 100 pg Reserpine (FIA - 5µL injection at 100 µL/min)
100:1 S/N (RMS) with full-scan acquisition of m/z 100 to m/z 1200

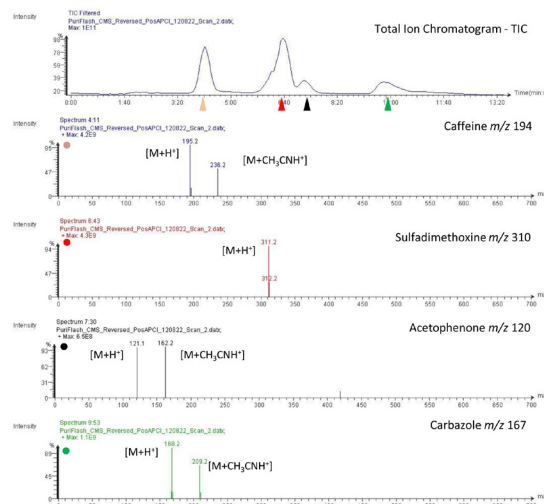
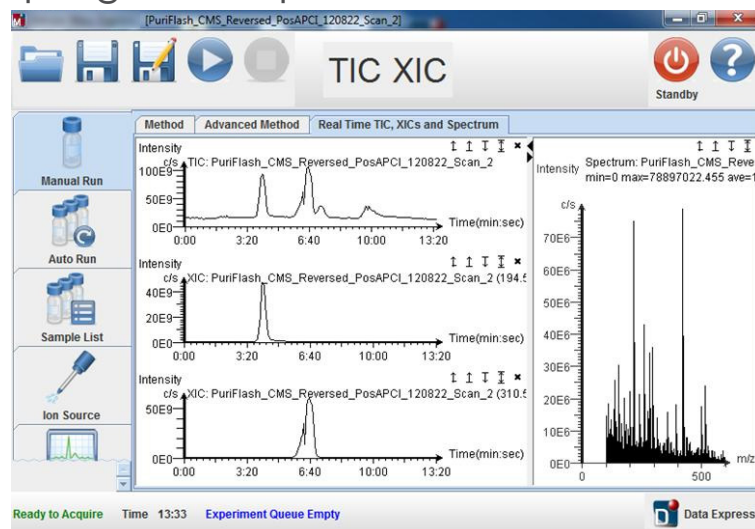
Accuracy: ±0.1 m/z units over entire acquisition range

Stability: ±0.1 m/z units 12 hours in temperature controlled environment (21 ± 3 °C)



The puriFlash MS push the mass specs boundaries for Identification, separation & purification to chemists fume hoods.

Spectra @ individual time point



INTERFINE CHEMICALS

ITM-2012/09/27

interchim

211 bis, avenue JF Kennedy
BP 1140 - 03100 Montluçon
Fax +33 (0)4 70 03 82 60

■ Hotline +33 (0)4 70 03 73 01 • interfine@interchim.fr ■

Normal-Phase - APCI/MS Application

50mg/mL standard of caffeine, acetophenone and carbazole in DMSO

puriFlash® column 15µm Silica HC 120G

Gradient method used (24.08 minutes) →

2mL injection (0.3g total loaded on-column)

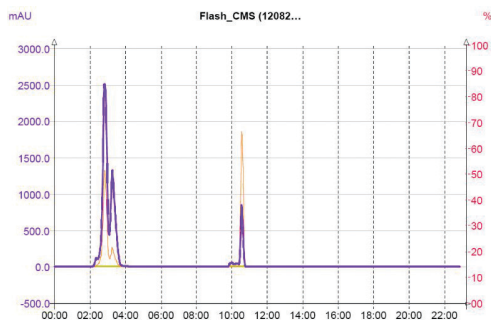
MRA valve set to 31: 4000:1

(15mL/min transfer rate)

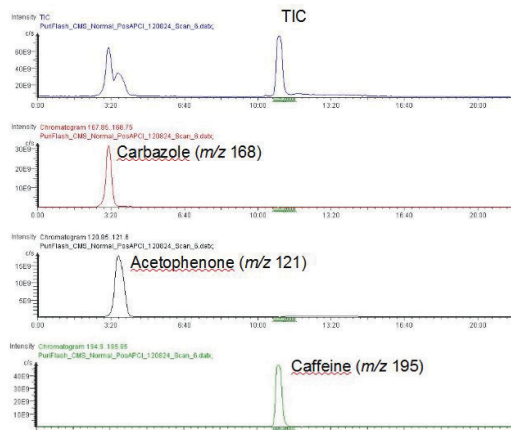
Eluent make up – Acetonitrile + 0.1% formic acid

Eluent make-up flow rate: 100µL/min

MS Parameters: m/z 100 – 600; 3000ms scan time; Corona 3mA



Purple trace – 254nm; Orange trace – 280nm



Reversed-Phase - APCI/CMS Application

50mg/mL standard of caffeine, sulfadimethoxine, acetophenone and carbazole in DMSO

puriFlash® column 15µm C-18 HP 20G

Gradient method used (13.5 minutes) →

1mL injection (0.2g total loaded on-column)

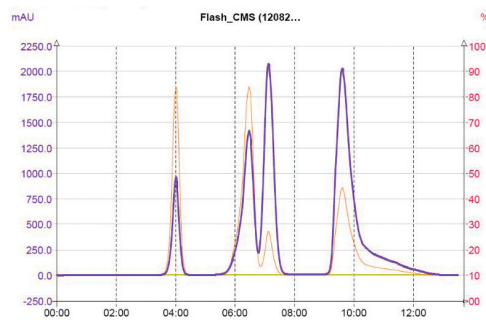
MRA valve set to 11: 500:1

(40mL/min transfer rate)

Eluent make up – Acetonitrile + 0.1% formic acid

Eluent make-up flow rate: 100µL/min

MS Parameters: m/z 100 – 600; 3000ms scan time; Corona 3mA



Purple trace – 254nm; Orange trace – 280nm

