



Chromeleon 7

Simply Intelligent

Now sold under the
Thermo Scientific brand

Thermo
SCIENTIFIC



Passion. Power. Productivity.

Discover Chromeleon 7

Go From Samples to Results Quickly and Easily

The Chromeleon® 7 Chromatography Data System delivers rich, intelligent functionality with Operational Simplicity™. Everything you need is within easy reach, whether you have only a single workstation or on an enterprise-scaled installation. The intuitive, easy-to-navigate user interface guides you effectively towards your goals. Innovative eWorkflows enable anyone to start chromatographic analyses and get good results with just a few clicks. Powerful data analysis tools ensure that any required data manipulation can be done efficiently and accurately. Chromeleon 7 gets you from samples to results quickly and easily—boosting your overall lab productivity.

Automate

Use **eWorkflows** to streamline your lab's daily routines, whether they involve quality control, research, method development, or other applications of chromatography.

Begin

Take advantage of **Operational Simplicity** with the easy to understand Chromeleon software user interface.



Control

Gain complete **Instrument Control** throughout the entire network for fully automated and documented analytical processes.

Analyze

Get the **Data Treatment** you want in seconds, without tedious parameter tweaking.



Improve your productivity, increase accuracy, and train new users quickly. With its intelligent features and operational simplicity, Chromeleon 7 is *simply intelligent*.



Secure

Ensure **Compliance** by controlling and managing your workflow.



Deliver

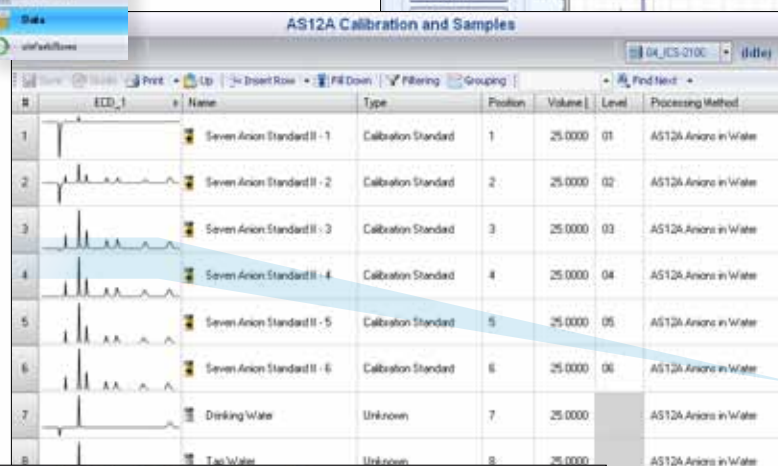
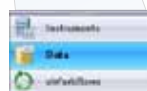
Get **Final Results** instantly, in the exact format you want them. View results on screen, print custom reports, and export raw data and results to other programs.

Advantages of Operational

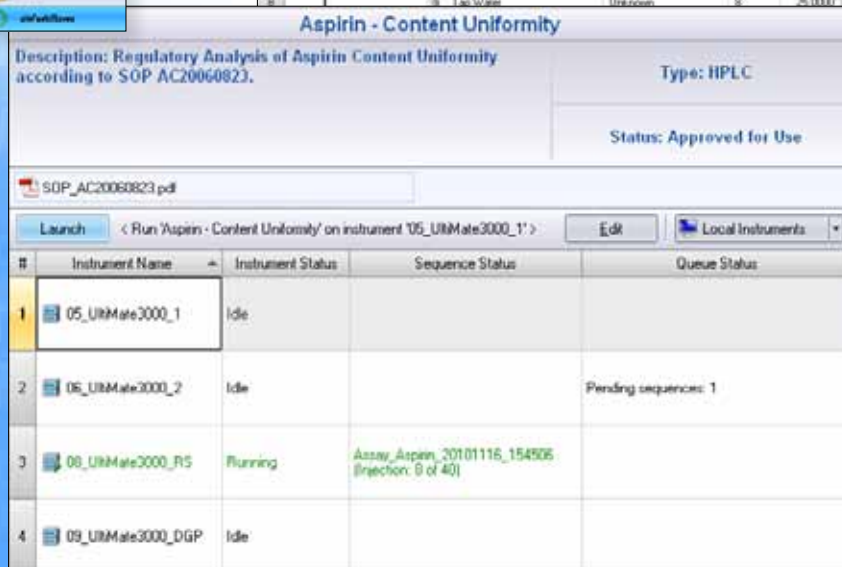
Find Everything You Need Within Easy Reach



The Chromeleon 7 user interface combines intelligent functionality with operational simplicity. Features you need most often are kept within view, while specialized options are kept out of the way, yet easy to find. The **Chromeleon Console's** category bars guide you to your area of interest, and give immediate access to instruments, data, and eWorkflows.



#	ECD_1	Name	Type	Position	Volume	Level	Processing Method
1		Seven Anion Standard II - 1	Calibration Standard	1	25.0000	01	AS12A Anions in Water
2		Seven Anion Standard II - 2	Calibration Standard	2	25.0000	02	AS12A Anions in Water
3		Seven Anion Standard II - 3	Calibration Standard	3	25.0000	03	AS12A Anions in Water
4		Seven Anion Standard II - 4	Calibration Standard	4	25.0000	04	AS12A Anions in Water
5		Seven Anion Standard II - 5	Calibration Standard	5	25.0000	05	AS12A Anions in Water
6		Seven Anion Standard II - 6	Calibration Standard	6	25.0000	06	AS12A Anions in Water
7		Drinking Water	Unknown	7	25.0000		AS12A Anions in Water
8		Tap Water	Unknown	8	25.0000		AS12A Anions in Water



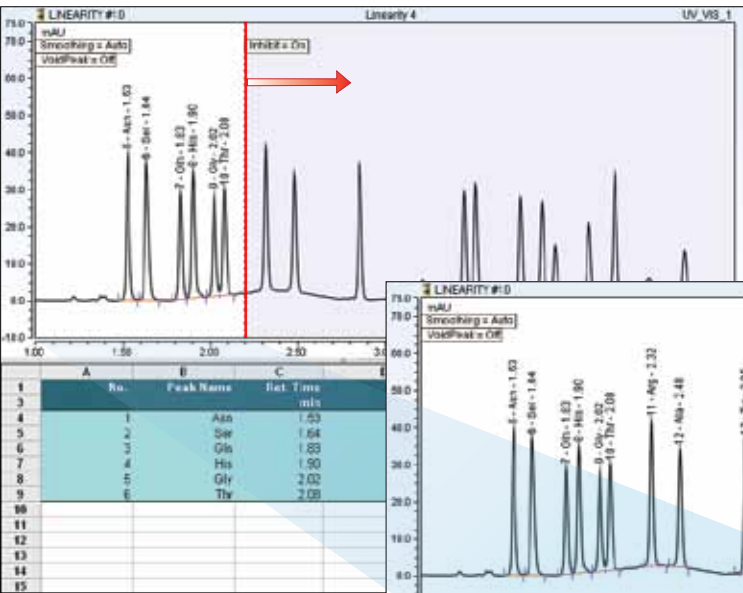
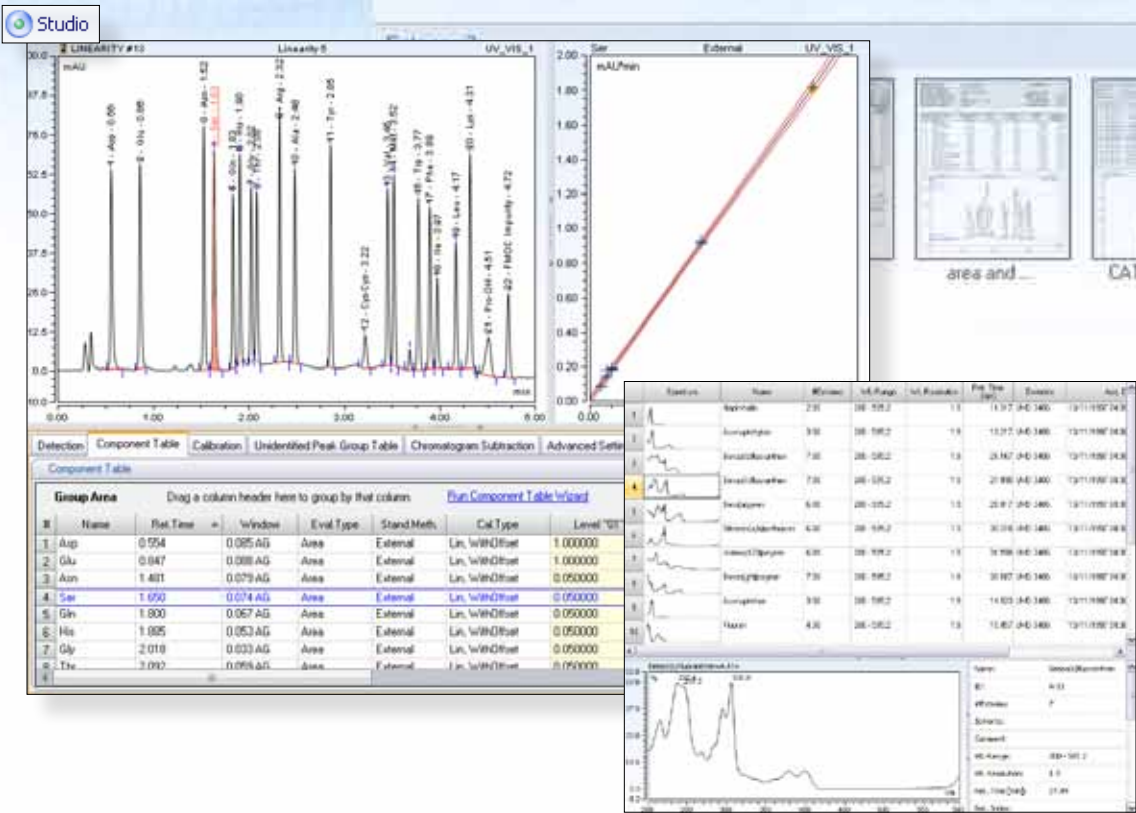
#	Instrument Name	Instrument Status	Sequence Status	Queue Status
1	05_URMate3000_1	Idle		
2	05_URMate3000_2	Idle		Pending sequences: 1
3	08_URMate3000_RS	Running	Assay Aspirin_20101116_154505 (Injection: 8 of 40)	
4	09_URMate3000_DGP	Idle		

Thumbnail images give you an instant visual summary of your data.

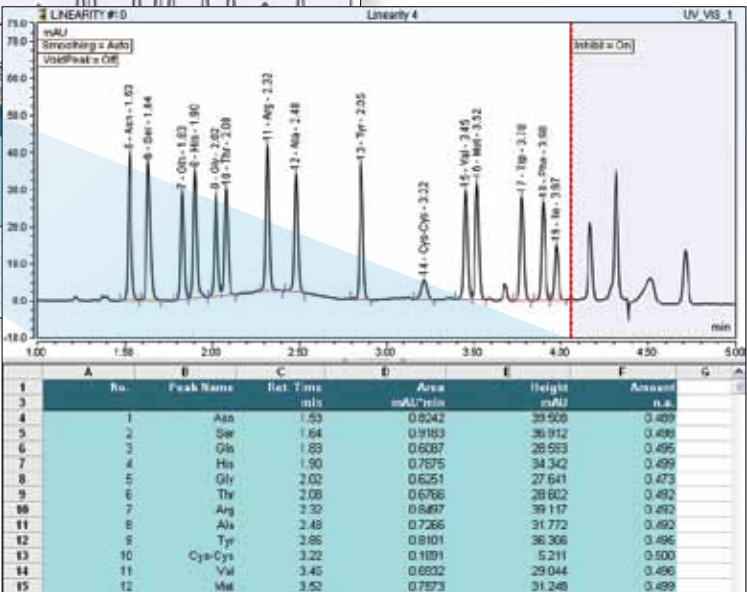
Simplicity

Instantly access everything related to your sequence in the **Chromatography Studio**:

- Chromatograms
- Processing Parameters
- Calibration Plots
- Reports
- Spectral Libraries
- And more...



Initial Peak Selection



Extended Peak Selection

All functions are easily accessible. For instance, just drag the integration parameter lines...

... and the updated results are displayed immediately.

Streamline Your Workflow

Automate Your Process at a Higher Level

The Challenge: Every lab has its own procedures to get from samples to results. These procedures are constructed from a complex collection of protocols, documents, and references. Due to this complexity, preparing to run an analysis can be slow, tedious, and error-prone.

Solutions: The **Chromeleon eWorkflow framework** provides an easy way to automate all of your chromatography analyses. This eliminates unnecessary steps, speeds up the execution, and prevents errors.

Advantages: This revolutionary Chromeleon eWorkflow framework minimizes operator tasks between sample receipt and generation of the final result, dramatically boosting laboratory productivity.



Aspirin - Content Uniformity

Description: Regulatory Analysis of Aspirin Content Uniformity according to SOP AC20060823.

Type: HPLC

Status: Approved for Use

SOP_AC20060823.pdf

Launch < Run 'Aspirin - Content Uniformity' on instrument '05_UltiMate3000_1' > Edit Local Instruments

#	Instrument Name	Instrument Status	Sequence Status
1	05_UltiMate3000_1	Idle	
2	06_UltiMate3000_2	Idle	
3	08_UltiMate3000_RS	Running	Assay_Aspirin_20101116_1 (Injection: 8 of 40)
4	09_UltiMate3000_DGP	Idle	

eWorkflow Wizard

Sample

Define the desired number of samples and the corresponding start position

Number of samples: 1 [1...10]

Sampler start position: RA1 [RA1...B5]

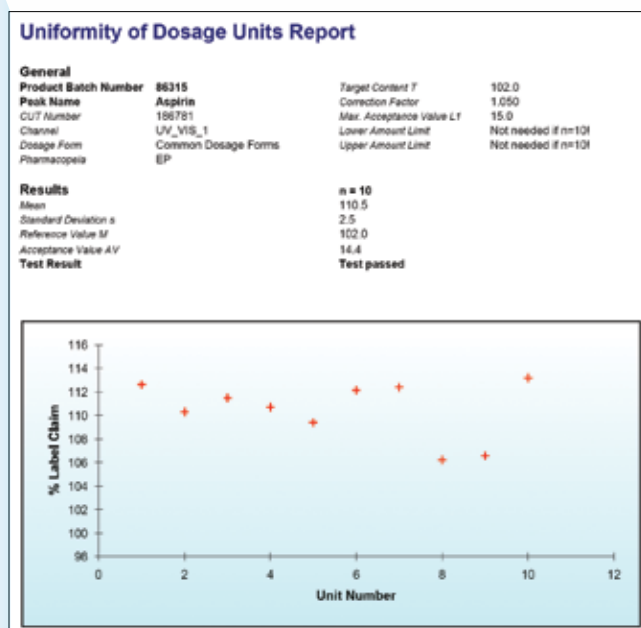
☒ Run sequence after creation

Cancel Finish

Simply choose an **eWorkflow** template, enter the number of samples, and start your analysis.

Type	Level	Position	Volume [μl]	Pharmacopeia	Dosage Form	Status	Injection
Calibration Standard	01	RA1	10.000	EP	Common Dosage Form	Running	16/
Calibration Standard	01	RA1	10.000	EP	Common Dosage Form	Idle	
Calibration Standard	02	RA2	10.000	EP	Common Dosage Form	Idle	
Calibration Standard	02	RA2	10.000	EP	Common Dosage Form	Idle	
Calibration Standard	03	RA3	10.000	EP	Common Dosage Form	Idle	
Calibration Standard	03	RA3	10.000	EP	Common Dosage Form	Idle	
Check Standard	04	RA4	10.000	EP	Common Dosage Form	Idle	
Check Standard	04	RA4	10.000	EP	Common Dosage Form	Idle	
Unknown		RA5	10.000	EP	Common Dosage Form	Idle	
Unknown		RA5	10.000	EP	Common Dosage Form	Idle	
Unknown		RA5	10.000	EP	Common Dosage Form	Idle	
Unknown		RA5	10.000	EP	Common Dosage Form	Idle	
Unknown		RA5	10.000	EP	Common Dosage Form	Idle	
Unknown		RA5	10.000	EP	Common Dosage Form	Idle	
Unknown		RA5	10.000	EP	Common Dosage Form	Idle	
Unknown		RA5	10.000	EP	Common Dosage Form	Idle	
Unknown		RA5	10.000	EP	Common Dosage Form	Idle	
Unknown		RA5	10.000	EP	Common Dosage Form	Idle	
Unknown		RA5	10.000	EP	Common Dosage Form	Idle	
Check Standard	04	RA6	10.000	EP	Common Dosage Form	Idle	
Check Standard	04	RA6	10.000	EP	Common Dosage Form	Idle	

Type	Date Modified	Comment
Report Template	22/07/2010 2:04 PM	
Processing Method	16/11/2010 3:33 PM	
View Settings	22/07/2010 2:04 PM	
Instrument Method	22/07/2010 2:04 PM	Aspirin CU1 on Ultimate_1
Associated File	16/11/2010 4:08 PM	



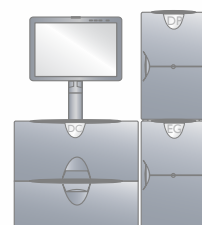
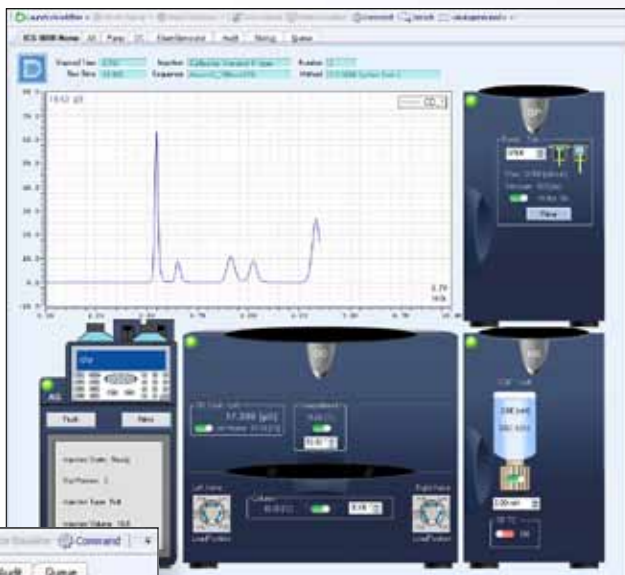
The **eWorkflow** creates the sequence, starts the run, and ensures that data are processed and reported correctly—minimizing user error and reducing review time.

Gain Complete Control

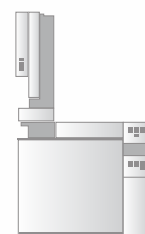
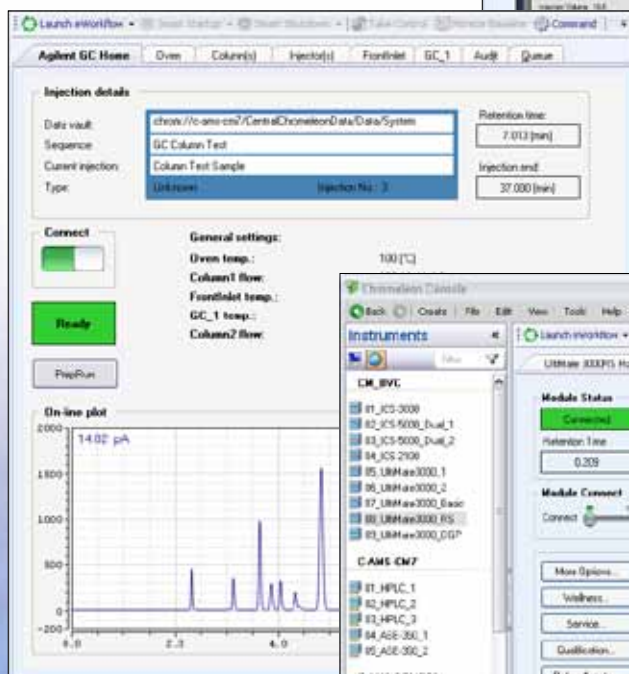
Simplify Management of All Your Instruments and Data

Intuitive ePanels give you **full control** of instruments from Dionex and other manufacturers. Get immediate access to all main instrument functions (such as flow rate, temperature, detector settings), plus easy access to advanced features. Instrument control has never been easier!

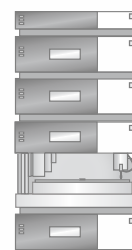
ePanel for Instrument 1



ePanel for Instrument 2

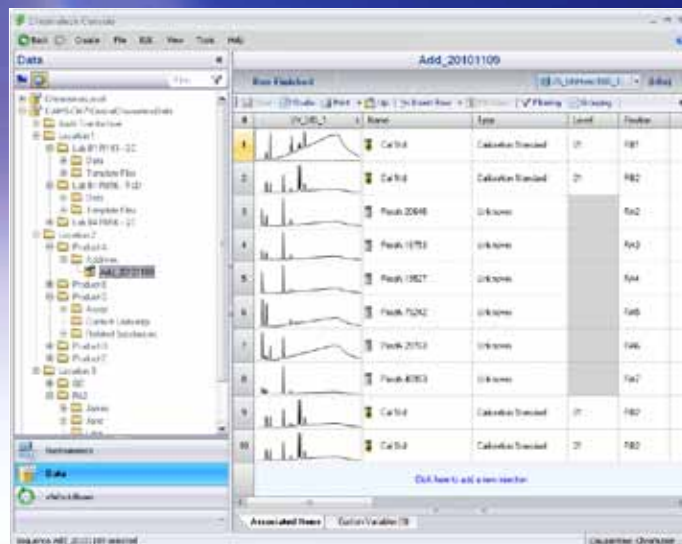


ePanel for Instrument 3

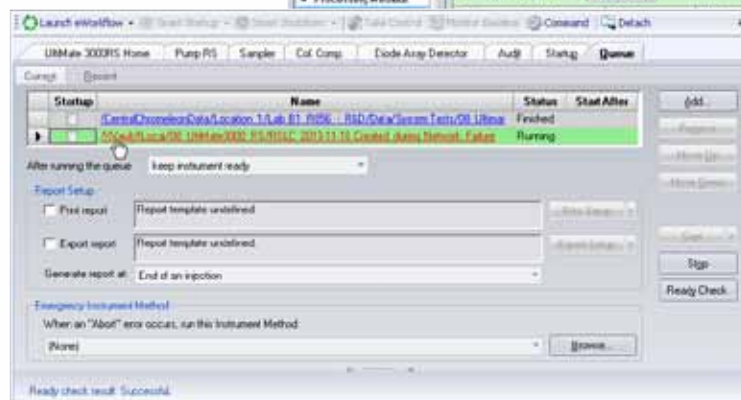


All instruments are **automatically displayed** in the software and can be controlled from anywhere in your network. Simply click on the instrument you want to use, and start working with it.

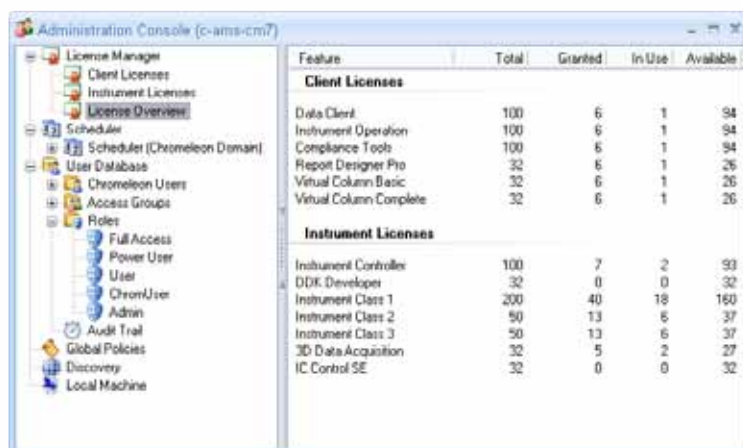
Intelligent database functionality provides immediate access to all data in your laboratory, across all laboratories on site, or even throughout your organization worldwide.



Intelligent **Network Failure Protection** based on the Chromeleon software's secure XVault™ infrastructure keeps instruments running and data accessible for processing during network outages.



One central **Administration Console** accessible throughout your network provides all the tools needed to efficiently manage your Chromeleon domain, such as license and user management.

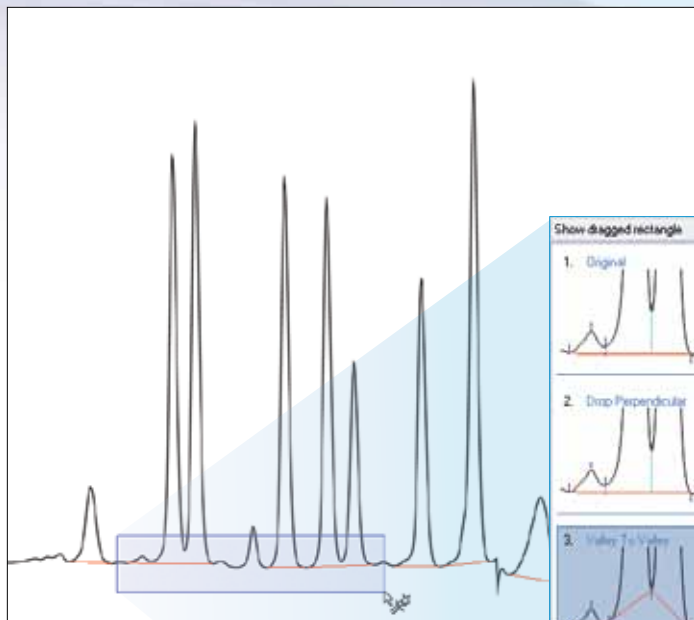


Speed Up Data Analysis

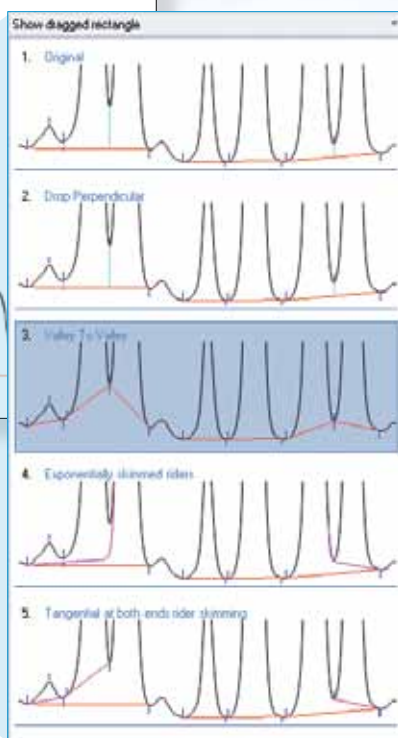
Get the Peak Treatment You Want Quickly and Reproducibly

A major decision area in chromatography is **Peak Detection**. Where do the peaks really start and end, how should baselines be drawn, and which detection variables will give the desired integration?

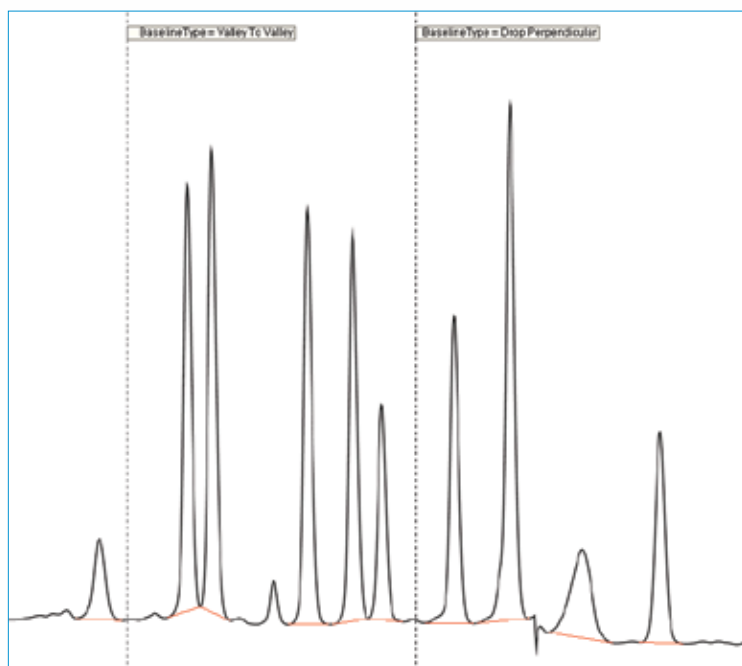
The new **Cobra™ detection algorithm** reliably detects peak start and end times, and correctly assigns peak baselines without requiring you to enter a long list of detection parameters.



Simply select a region of the chromatogram, and then choose the integration treatment you want.



For the challenge of unresolved peaks, the unique **SmartPeaks™** integration assistant gives you the baselines you want quickly, easily, and intuitively. No training is required, so even novices can immediately integrate complex chromatograms appropriately and reproducibly.



The detection parameters are automatically created. SmartPeaks saves time and effort, and gets you quickly to your integration goals.


Control and Manage Your Laboratory Operations

The image displays three overlapping screenshots of the Windows XP 'Create User Account' wizard:

- Top Window:** Shows the 'General' tab. The 'User Name' field contains 'jrtaylor' and the 'Full Name' field contains 'Harry Taylor'. Explanatory text states: 'The user name is the name to enter when logging on; it must have 1 to 32 characters and must not contain quotes or single quotes.' Another note says: 'The full user name [for display purposes only]'.
- Middle Window:** Similar to the top one, but with 'User Name' set to 'ATLung' and 'Full Name' set to 'Alan Turing'. It includes the same explanatory text.
- Bottom Window:** Shows the 'Select the Roles where the User will be member of' step. A list of roles is shown with checkboxes:

Role	Description
<input type="checkbox"/> Full Access	Full Access to all privileges
<input checked="" type="checkbox"/> Power User	Chromium Power User
<input type="checkbox"/> User	Chromium User
<input type="checkbox"/> Guest	Chromium User
<input checked="" type="checkbox"/> Admin	Chromium Administrator

In the background, the 'Administrative Tools' console is visible, listing various system tools like Event Viewer, Task Scheduler, and Device Manager.



Chromeleon 7 Installation Qualification Report

CrmlQ, Version 7.1.0.836

Shortcuts:

- [System Information](#)
- [Status of Chromeleon](#)
- [Data Vaults](#)
- [Chromeleon Services](#)
- [Installed Files](#)
- [Files installed by 3rd Party products](#)

Summary

No. of failing files:	0
No. of errors:	0
No. of warnings:	1
No. of checked files:	1294
Errors and Warnings:	No local default could be found: 1

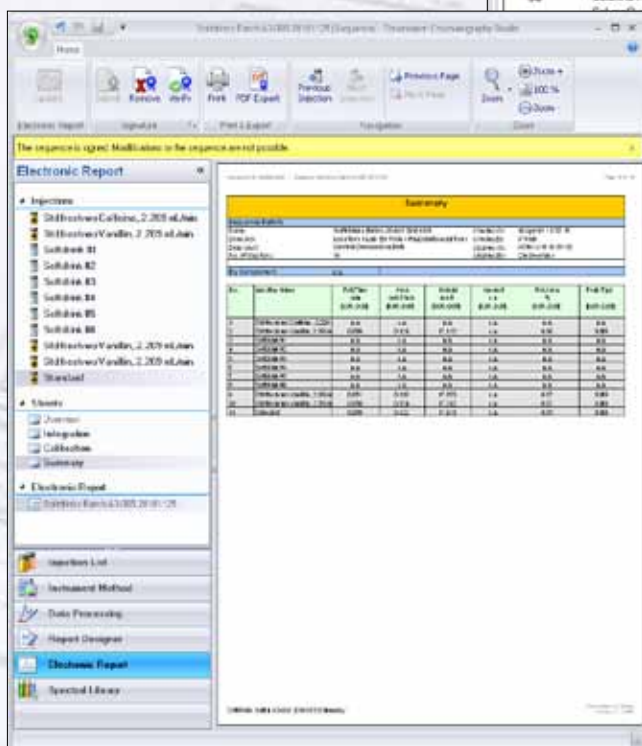
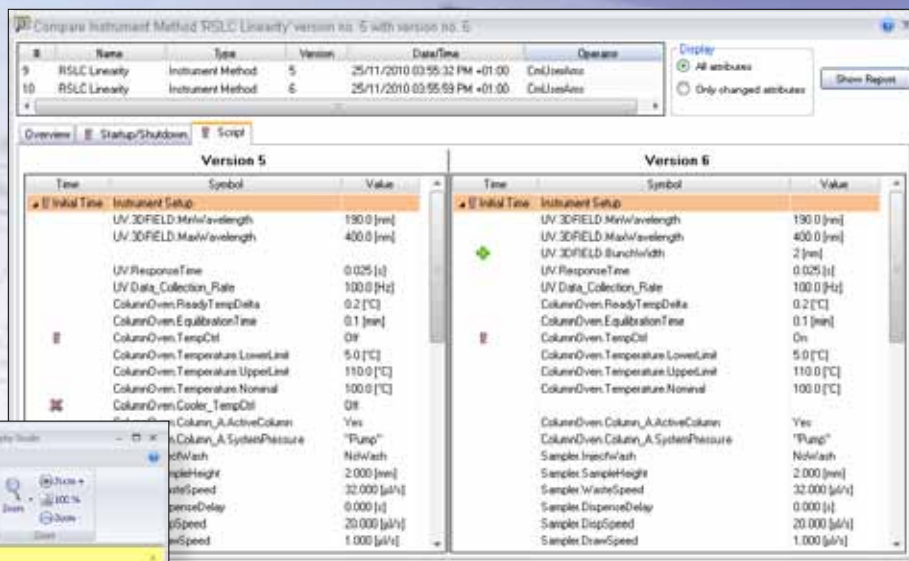
System Information

Local time:	25/11/2010 02:06:43 PM
Computer name:	CM_8VC_EU.konze.internal
User name:	EU\Barbara.van.cann
Setup installed by:	barbara.van.cann
Operating system:	Microsoft Windows XP Professional (Service Pack 3) Vers: 3.1 Build 2600
No. of processors:	1
Processor 1:	Intel(R) Pentium(R) D CPU 3.20GHz Intel x86 Family 15 Model 6 (stepping 4 (32 bit) Clockspeed: 3102 MHz (max. 3102 MHz) No. of cores: 2
Total memory:	7048 MB
Available memory:	189 MB



The screenshot displays the Chromeleon software interface, specifically the Audit Trail feature. The top window shows a list of actions performed, including 'Injection Control Method Loading', 'Parameter Management', and 'Injection Control Method Loading'. The bottom window shows a detailed view of the 'All system Library 20131111 13:03:42' audit trail, listing actions like 'Sequence', 'Call Sequence', and 'Finished Run' with their respective dates, times, and descriptions.

Track changes with **Audit Trails** and Version Comparison tools, and easily revert to a prior version.



Implement an efficient, paperless approval process that fully complies with 21 CFR Part 11, using electronic reports with up to three levels of signatures.



Include versatile **System Suitability Tests** in your methods, to automatically ensure chromatography quality as your samples are analyzed..

Injection Type		Result	Passing
Injection Type: Calibration (Standard)	Passed	0	
Injection Type: Check Standard	Passed	1	
Injection Type: Check Standard	Failed	1	

Processing Method:		Inquiries Part 1	
Injection Date/Time:		25-Jan-01 06:16	

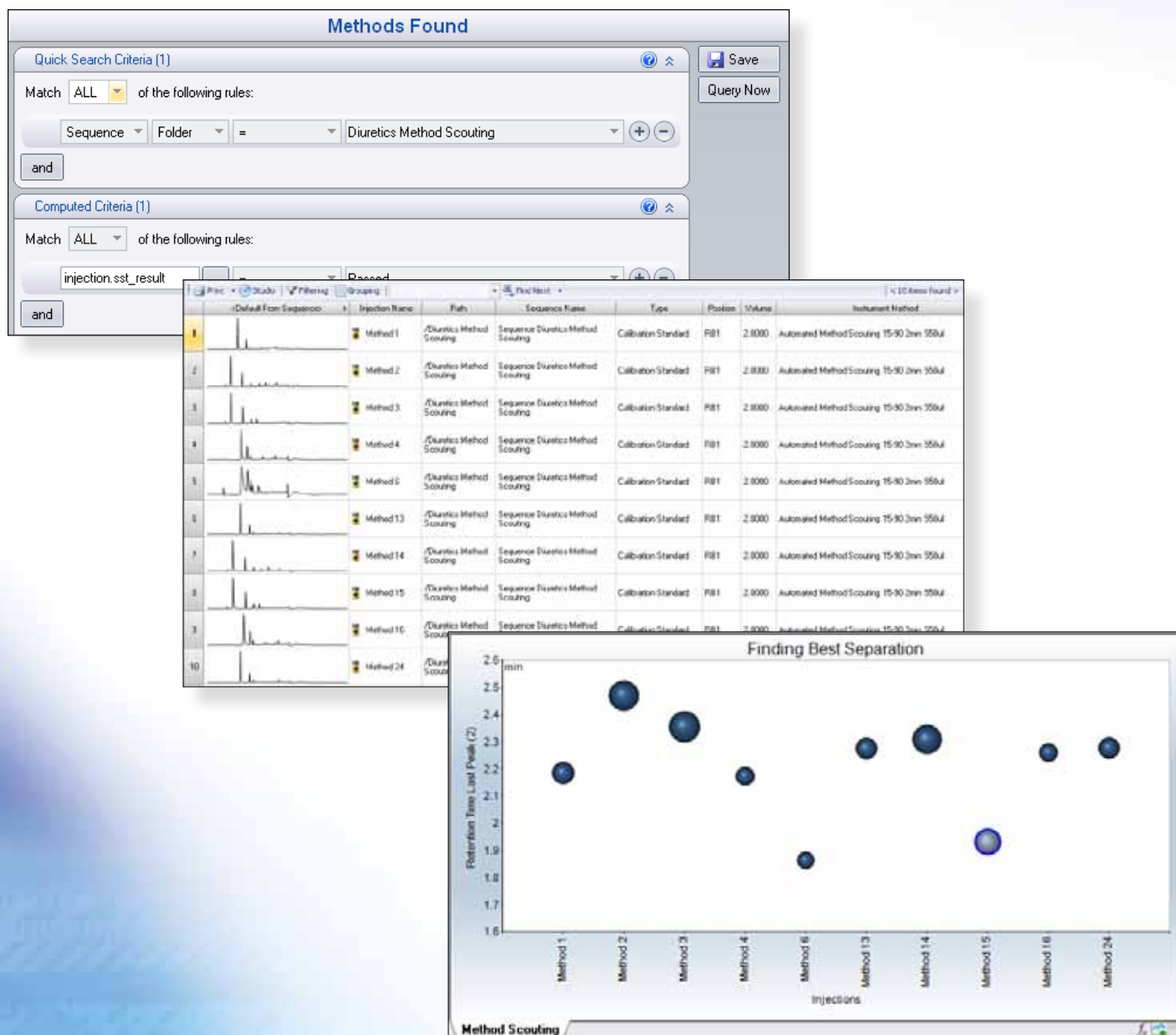
SST Results				
No	Name	Injection Condition	Peak	Test Result
1	Theoretical Plates (USP)	Injection Type: Calibration Standard	Main Peak	Passed
2	Resolution (USP)	Injection Type: Check Standard	Main Peak	Passed
3	RSD of Peak Areas	Injection Type: Check Standard	Main Peak	Failed
				SST-2
				SST-3
				SST-4
				SST-5
				SST-6

Number of executed tests: 3		Total Result:	
		Failed	

Finalize and Deliver Results

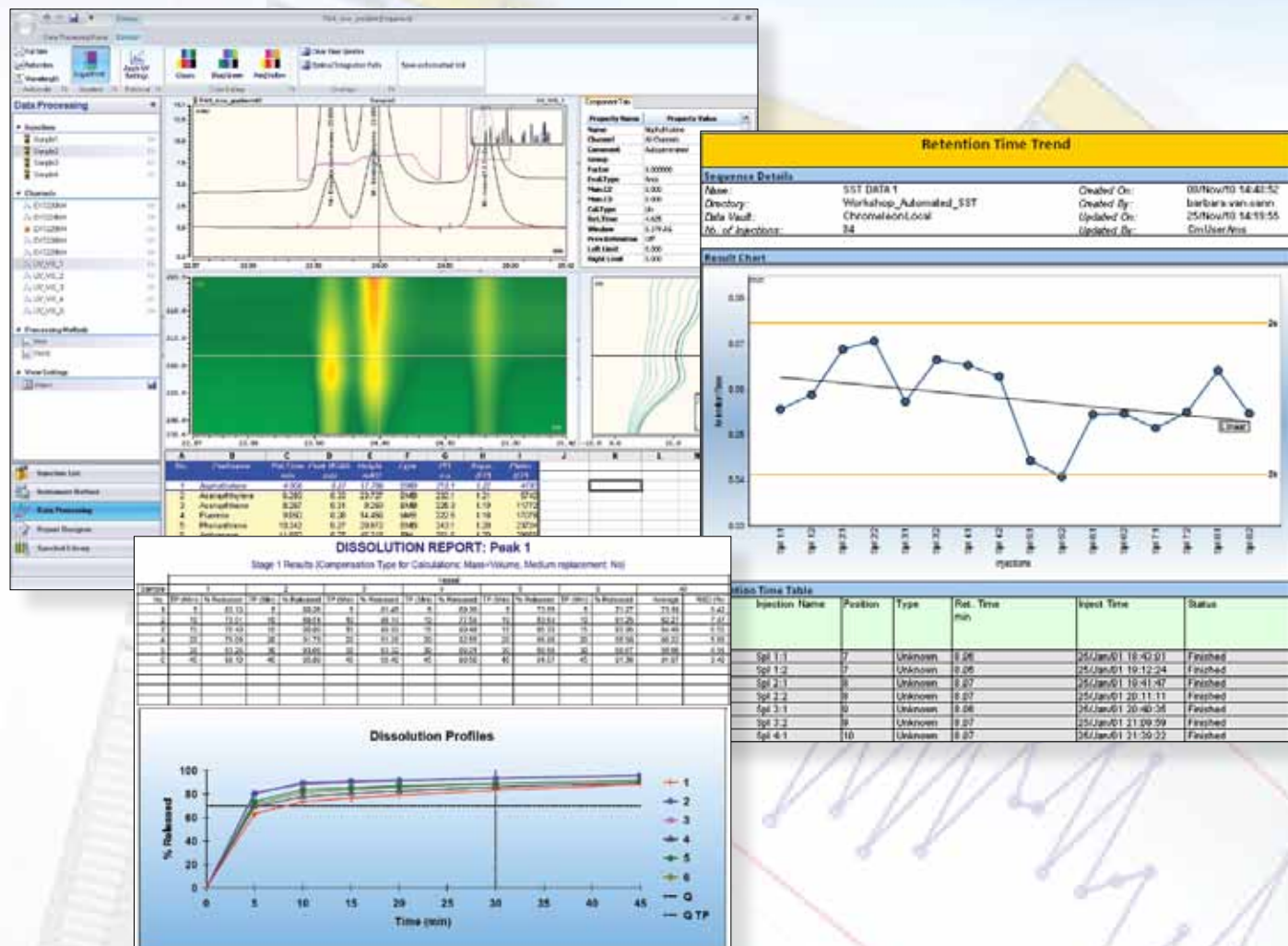
Get the Most Out of Your Data Quickly and Easily

Find and collate results quickly and easily using
powerful data mining tools .



Use **queries** to quickly gather, display, and report related data, even from several independent sequences.

Take advantage of **extensive 3D data analysis capabilities** to confirm peak purity, positively identify compounds, and optimize methods.



Produce the reports you need—quickly and easily—using **built-in spreadsheets.**

Discover Chromeleon 7

Chromeleon 7 is the next-generation Chromatography Data System that adapts to your needs with its simplified user interface, innovative eWorkflows, powerful data mining and analysis tools, and unrivaled reporting capabilities.

Chromeleon 7 software is simply intelligent, from samples to results.

For more information or to place an order, call (800) 346-6390 within the U.S., or contact the Dionex Regional Office nearest you. Outside of the U.S., order through your local Dionex office or distributor.

Enjoy Industry-Leading Support

Dionex Customer Support Centers are located in the United States, Europe, and Asia. These state-of-the-art laboratories are equipped with the full line of Dionex LC instrumentation and software capabilities. Support Centers provide accessible locations for advanced training and enhanced application development capabilities. Users can attend these laboratories to learn new skills in addressing challenging applications, receive training and support, and discover new, innovative HPLC and IC solutions.

Corporate Headquarters

Dionex Corporation
1228 Titan Way
P.O. Box 3603
Sunnyvale, CA 94088-3603
Tel: (408) 737-0700
Fax: (408) 730-9403

Worldwide Sales and Service

North America

U.S./Canada (847) 295 7500

South America

Brazil (55) 11 3731 5140

Europe

Austria	(43) 1 616 51 25
Benelux	(31) 20 683 9768 (32) 3 353 42 94
Denmark	(45) 36 36 90 90
France	(33) 1 39 30 01 10
Germany	(49) 6126 991 0
Ireland	(353) 1 644 0064
Italy	(39) 02 51 62 1267
Sweden	(46) 8 473 3380
Switzerland	(41) 62 205 9966
United Kingdom	(44) 1276 691722

Asia Pacific

Australia	(61) 2 9420 5233
China	(852) 2428 3282
India	(91) 22 2764 2735
Japan	(81) 6 6885 1213
Korea	(82) 2 2653 2580
Singapore	(65) 6289 1190
Taiwan	(886) 2 8751 6655

www.dionex.com



Dionex products are designed, developed, and manufactured under an ISO 9001 Quality System.

Cobra, SmartPeaks, Operational Simplicity, and XVault are trademarks and Chromeleon and UltiMate are registered trademarks of Dionex Corporation.

© 2011 Dionex Corporation
LPN 2200-01 10M 01/11 Printed in U.S.A.