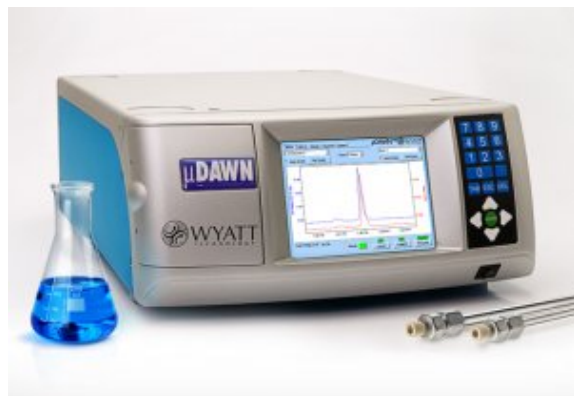


## μDAWN



The first SEC-MALS detector for UHPLC. Uncompromised sensitivity. The μDAWN can be coupled to any UHPLC-SEC system to determine absolute molecular weights and sizes of proteins, peptides, polymers or nanoparticles below 50 nm in radius directly, without resorting to column calibration or reference standards.

The μDAWN brings all the advantages of SEC-MALS to the world of UHPLC, including optional embedded dynamic light scattering. Use in conjunction with the Optilab UT-rEX differential refractometer for UHPLC.

[Więcej informacji](#)