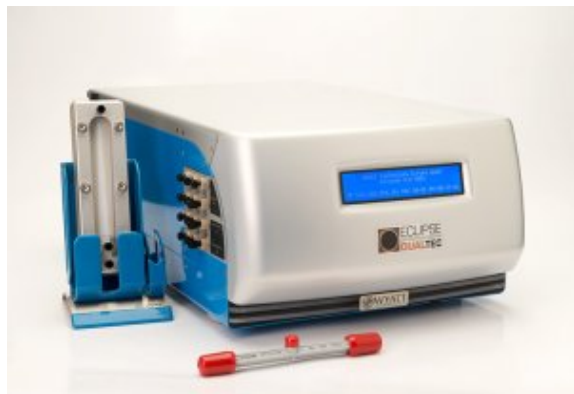


Eclipse DualTec



Unprecedented productivity, and flexibility for separating proteins, polymers, colloids and nanoparticles.

The Eclipse® DualTec supports both Hollow-Fiber Flow-FFF (HF5) and Asymmetric Flow FFF (AF4) in one instrument. Utilizing one HPLC stack and one set of Wyatt detectors, the DualTec permits automated switching between any two of SEC, AF4 and HF5 separation followed by MALS and/or DLS characterization.

[Więcej informacji](#)