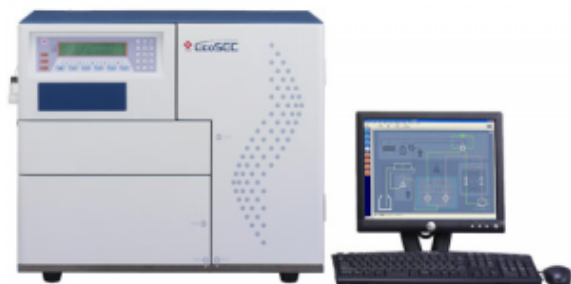


EcoSEC Systems



The EcoSEC GPC System is a dedicated GPC instrument developed for fast polymer analysis. The all-in-one System delivers top performance, reliability and superior results. Time and solvent can be saved when the EcoSEC GPC System is coupled with our extensive line of highly efficient, semi-micro TSKgel columns.

Features:

- Most stable RI baseline available due to unique dual flow RI detector design
- Excellent precision of retention times for accurate molar mass measurements due to temperature controlled pumps
- Very low dead volume for improved resolution and molar mass distribution accuracy
- Dedicated all-in-one design concept includes autosampler for small footprint
- Dual flow RI detection for unmatched baseline stability

Film
