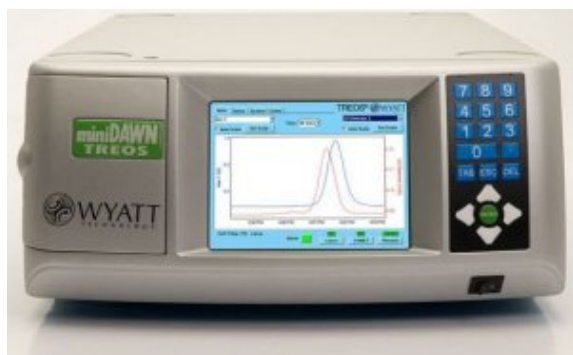


miniDAWN TREOS II



The best in basic multi-angle light scattering for absolute macromolecular analysis

The miniDAWN® TREOS® II determines absolute molar mass and size to characterize proteins, peptides, small polymers and nanoparticles in solution. Coupled to SEC/GPC, it eliminates the uncertainty and hassle of column calibration, for true confidence in macromolecular characterization.

[Więcej informacji](#)